

**Catalog No.:** M112

**Product Name:** HMW DNA Ladder

**Size:** 3000 $\mu$ l

**Description:** HMW DNA Ladder consists of 5 DNA fragments of 2, 3, 4, 6 and 10 base pairs (kb). This DNA ladder is particularly useful for high molecular weight DNA bands. Generally, 6 $\mu$ l will be enough for an agarose gel, which will yield at least 60ng DNA in any single band. The intensity of all the bands has been increased to serve as a strong DNA ladder for easy identification in some applications.

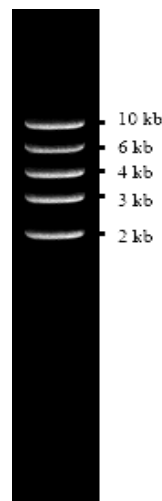
**Storage:** Store at -20°C.

**Concentration:** 500ng/6 $\mu$ l

**Loading Buffer Composition:**

10mM Tris-HCl  
1mM EDTA (pH 8.0)  
0.02% Bromophenol blue  
0.02% Xylene cyanol  
5% Glycerol

**Usage:** Add 6 $\mu$ l HMW DNA Ladder directly to wells designated for markers. You may need more than or less than 6 $\mu$ l of the ladder, depending on well size and level of intensity needed to visualize the bands.



**HMW DNA Ladder**  
1.0% agarose gel

<b>Related products</b>	<b>Catalog No.</b>
• 1Kb DNA Ladder II	M108
• 100bp DNA Ladder	M107
• Pre-stained 1 Kb Ladder	M202
• Pre-stained 100bp Ladder	M201
• Agarose (Standard-Agarose)	A113
• Agarose Tablets	A118
• DNA SafeStain	C138
• Ultra Bright LED Transilluminator	SLB-01
• UltraSlim® LED Illuminator	LB-16

*This product is for research use only.*