

Catalog No.: M108-5

Product Name: 1Kb DNA Ladder

Size:

1Kb DNA Ladder:	5X 1000 μ l
6X DNA loading Buffer:	3X 1000 μ l

Description: **1Kb DNA Ladder** is a proprietary mixture of several plasmids digested to completion with specific restriction enzymes to produce a ladder with 11 fragments ranging from 0.5-10.0Kb, producing the most complete and convenient ladder in the 1Kb DNA ladder family. The intensity of the some bands has been increased to yield internal reference indicators. 6 μ l will yield at least of 30ng DNA in any single DNA band.

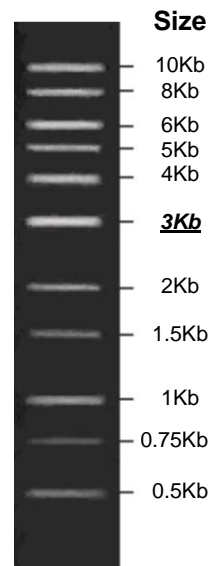
Storage: Store at -20°C.

Concentration: 500ng/6 μ l

Loading Buffer Composition:

10mM Tris-HCl
 1mM EDTA (pH 8.0)
 0.02% Bromophenol blue
 0.02% Xylene cyanol
 5% Glycerol

Usage: Add at least 6 μ l **1Kb DNA Ladder II** directly to wells designated for markers. You may need more than 6 μ l of ladder, depending on well size and level of dye used to visualize the bands.



1Kb DNA Ladder II
 500ng
 0.8% agarose gel

Related products	Catalog No.
• 100bp DNA Ladder	M107
• Agarose (Standard-Agarose)	A113
• DNA SafeStain	C138
• Ultra Bright LED Transilluminator	SLB-01
• UltraSlim® LED Illuminator	LB-16

This product is for research use only.

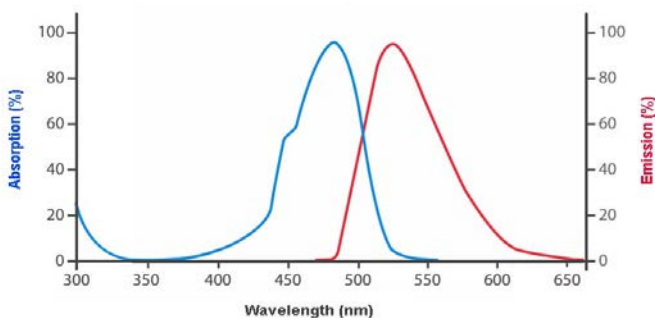
Catalog No.: C138-5

Product Name: **DNA SafeStain**

Size: **5X 1000 μ l**

Concentration: 10,000X

Description: **DNA SafeStain** is safe nucleic acid staining dye for the visualization of double-stranded DNA, single-stranded DNA, and RNA in agarose gels. The dye is developed to replace Ethidium Bromide (EtBr), a potent mutagen, commonly used in research labs for gel electrophoresis. **DNA SafeStain** is non-carcinogenic by the Ames test. **DNA SafeStain** emits green fluorescence when bound to DNA. It has two excitation wavelength peaks when bound to nucleic acid, at 290nm and 490nm. The emission wavelength for the **DNA SafeStain** is 530nm.



Storage: Store at 4°C or room temperature; avoid direct light.

User Instruction: **DNA SafeStain** can be used in the exact same way as EtBr in agarose gel electrophoresis. For example, add 10 μ l to 100ml agarose gel.

Special Notes:

1. For convenience, you can dilute the **DNA SafeStain** 10,000 times with the gel running buffer, and use this dye-containing running buffer to make and run the agarose gel.
2. As is the case with EtBr; add more **DNA SafeStain**, if brighter DNA bands are desired.
3. Consult and follow your institution's specific regulations for chemical disposal.

To view the results, any conventional DNA gel viewing light box or gel documentation system should work well with the **DNA SafeStain**; although, using a LED blue light instead of a UV light source is preferred due to the harmful nature of UV light.

This Product is For Research Use Only

Related Products:

100bp DNA Ladder
 1Kb DNA Ladder II
 100bp Plus DNA Ladder
 Pre-SafeStained 100bp DNA Ladder
 Pre-SafeStained 1Kb DNA Ladder

Cat. No.

M107
 M108
 M111
 M3002
 M1008