

Catalog No.: **M1008**

Product Name: PreSafeStained 1Kb DNA Ladder

Contents:

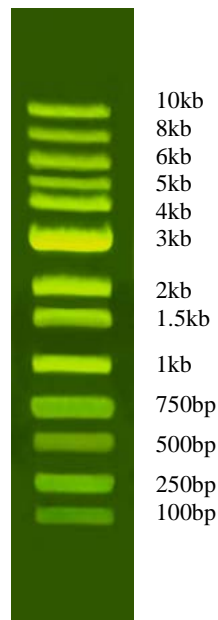
Component	Size
PreSafeStained 1Kb DNA Ladder	1000µl
6X SafeStain DNA Loading Dye	1000µl

Description: The **Pre-SafeStained 1Kb DNA Ladder** contains 13 DNA fragments ranging from 100bp to 10Kb. It is presatined so it can be visualized directly after running the gel without further DNA staining steps. The **SafeStain 6X DNA Loading Dye** contains two tracking dyes and also the same safe green fluorescent dye as in DNA ladder. The two tracking dyes are for monitoring the running of the agarose gel, and the green fluorescent dye is to stain the DNA samples. By using this special DNA loading dye, your agarose gel will reveal two different colors, blue and yellow while running and green fluorescent bands of DNA under LED or UV light without extra staining steps. DNA ladder and your samples will emit a green light (530nm).

Storage: Store at 4°C, or -20°C for long term; avoid light.

Composition of DNA SafeStain Loading Dye:

Tris-HCl	10mM
EDTA	1mM
Glycerol	5%
Xylene cyanol	0.06%
Yellow dye	0.6%
Green fluorescent dye	optimal
pH 7.5 @ 25°C	



M1008 on 0.7% agarose gel

Usage:

Mix your samples with the **SafeStain 6X DNA Loading Dye** in a 1:5 ratio. For example, add 1µl of the **SafeStain 6X DNA Loading Dye** to 5µl of DNA sample. Load the DNA ladder into a designated well, and the samples into other wells of the same agarose gel. Run the agarose gel and visualize under LED or UV light when ready. Take picture as needed. Note: It is better to use an amber filter (sometimes called a SYBR green filter) when taking pictures.

Related products	Catalog No.
• Agarose (Standard-Agarose)	A113
• PreSafeStain 100bp DNA Ladder	M3002
• SafeStain 6X DNA Loading Dye	6XLD
• Ultra Bright LED Transilluminator	LB-16
• UltraSlim® LED Illuminator	SLB-01

This product is for research use only.