



Catalog No.: **G02101**

Product Name: **AccuRuler Prestained Protein Ladder**

Size: 2x250µl

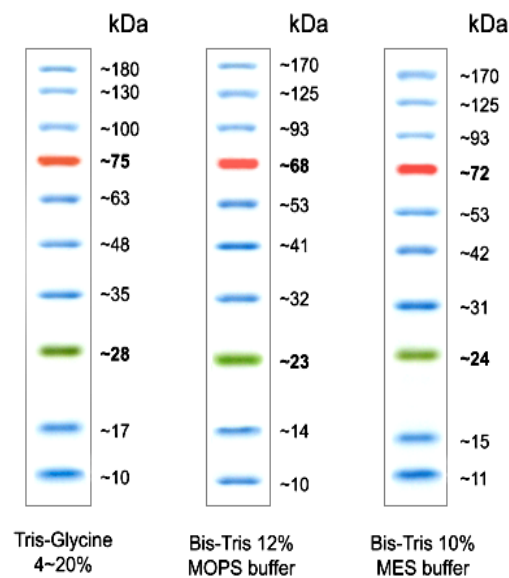
Description: The **AccuRuler Prestained Protein Ladder** contains 10 prestained proteins, covering a wide range of molecular weights from 10 to 180kDa. It is designed for monitoring protein separated during polyacrylamide gel electrophoresis, verification of Western transfer efficiency on membranes and for sizing of proteins. The ladder is supplied in protein gel loading buffer and is ready-to-use. No need to heat, dilute, or add reducing agent before loading.

Contents: 0.1~0.4 mg/ml of each protein in 20 mM Trisphosphate (pH 7.5 at 25°C), 2% SDS, 1 mM reducing reagent, 3.6 M Urea, and stabilizer.

Usage: For each application, 3 - 5µl is needed, depending on the size of the wells.

Quality Control: Tested in polyacrylamide gel electrophoresis and Western Blotting.

Storage: Store at -20°C.



Note: The apparent molecular weight of each protein (kDa) has been determined by calibration against an unstained protein ladder in each electrophoresis condition.

For laboratory research use only!

Related Products	Catalog No.
• Bradford Protein Assay	G1001
• ECL Western Blotting Detection Kit	G075
• AccuRuler <i>Broad</i> Prestained Protein Ladder	G02103